

Addendum

This addendum is an essential part of the following documents:

Series PM130 PLUS/PM135 Powermeters Installation and Operation Manuals – BG0425 for PM130P/ PM130E/ PM130EH PLUS devices, BG0518 for PM135P/ PM135E/ PM135EH devices.

Specification change:

PM13x series external CT making easier any installation. This option includes:

1. PM13xP/E/EH PLUS – HACS: 40mA (100-1200A)
2. PM13xP/E/EH PLUS – RS5: 2.5mA

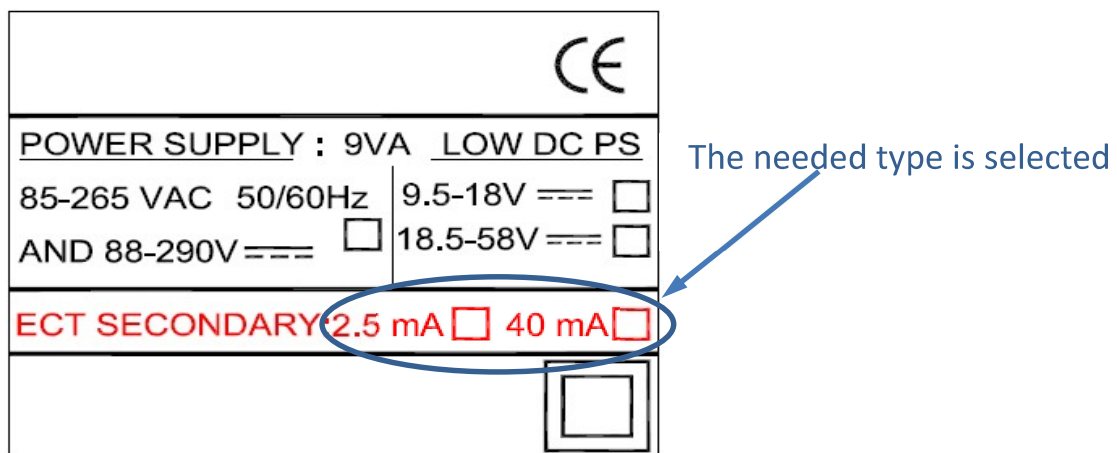

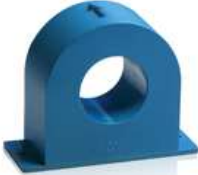



Figure 1: External CT secondary current rating Label

Table 1: PM13x series HACS & RS5:

ORDER STRING (Catalog no.)	CS05S / RS5 (HX0140)	CS1 (EL0072)	CS1L (EL0115)	CS1S (HX0118/HX0129)
				
RATING	10A	100A	100A	100A
WINDOW	Ø 16mm / 0.62"	Ø 12mm / 0.47"	Ø 23mm / 0.9"	Ø 16mm / 0.63"
CORE	Split	Solid	Solid	Split
ACCURACY	0.5%	0.1%	0.1%	0.5%
BURDEN	0.2 VA	0.2 VA	0.2 VA	0.2 VA
APPROX. WEIGHT	98.2g / 0.22 lbs	156.4g / 0.34 lbs	206.3g / 0.45 lbs	103.4g / 0.23 lbs

ORDER STRING (Catalog no.)	CS2S (HX0143)	CS4 (EL0117)	CS4S (HX0139)	CS8 (EL0125)
				
RATING	200A	400A	400A	800A
WINDOW	43.2x33mm / 1.7x1.3"	∅ 26mm / 1.02"	43.2x33mm / 1.7x1.3"	100x32mm / 4x1.28"
ACCURACY	0.5%	0.1%	0.5%	0.1%
CORE	Split	Solid	Split	Solid
BURDEN	0.2 VA	0.2 VA	0.2 VA	0.2 VA
APPROX. WEIGHT	460g / 1lbs	214g / 0.47 lbs	460g / 1lbs	525g / 1.16lbs

ORDER STRING (Catalog no.)	CS8S (HX0138)	CS12S (HX0137)
		
RATING	800A	1200A
WINDOW	50x80mm / 1.9x3.1"	121x80mm / 4.7x3.1"
ACCURACY	0.5%	0.5%
CORE	Split	Split
BURDEN	0.2 VA	0.2 VA
APPROX. WEIGHT	1.0kg / 2.2 lbs	1.5kg / 3.3 lbs

Technical Specifications

Frequency	50/60Hz
Lead Insulation	600V AC
Core Insulation	4000V AC
Lead Length	2.5m / 8.2ft (UL1015)
Operation Temperature	-40°C to +70°C
Storage Temperature	-40°C to +85°C
Standards Compliance	IEC 60044-1
Material	All materials are UL approved

The installation diagrams are shown on the Fig.2 & Fig.3.

PM13x series HACS and RS5 (split core CT) connection diagram

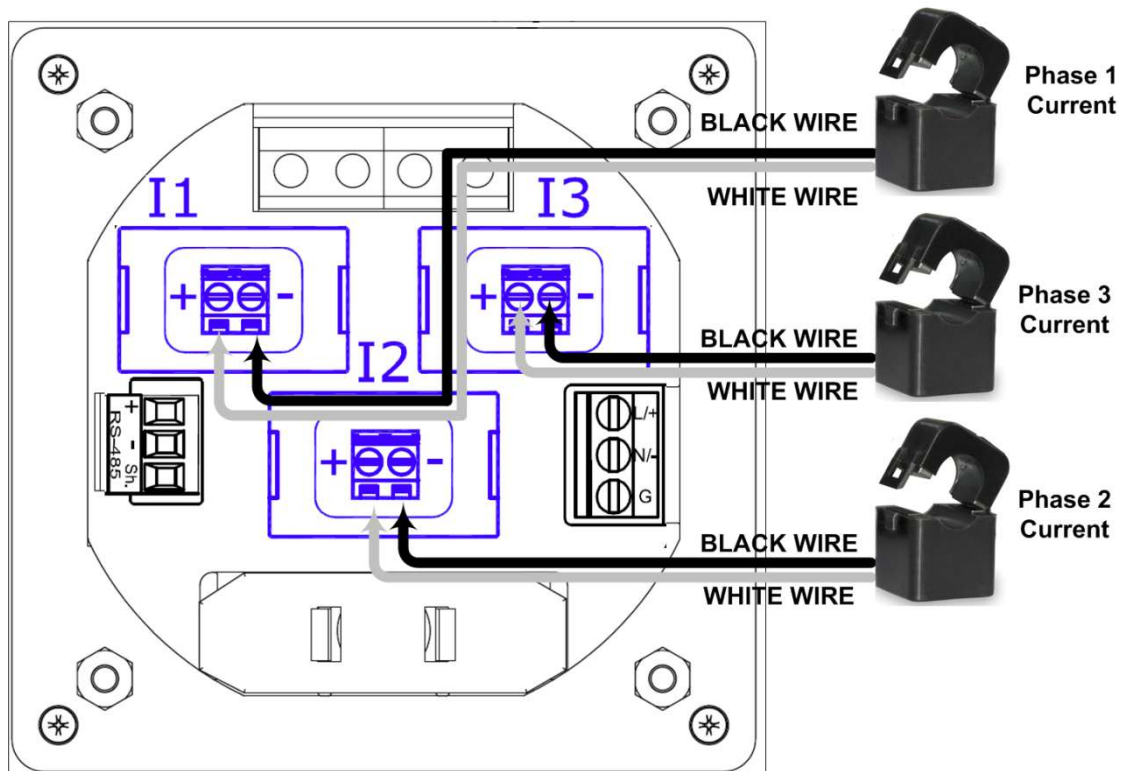


Figure 2: HACS or RS5 (solid core CT) connection diagram.

PM13x series HACS (solid core CT) connection diagram

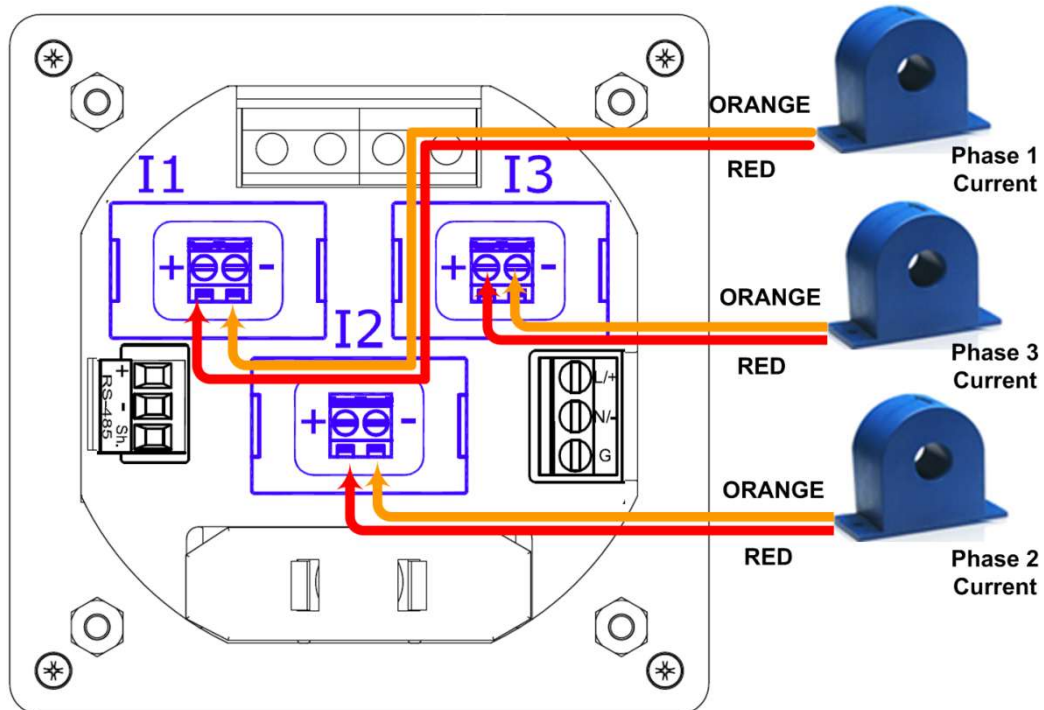


Figure 3: HACS Solid CT connection

Set CT Primary Current value to the nominal value of the used HACS (solid or split core CT)

The regular value

The value after change (100A external CT)

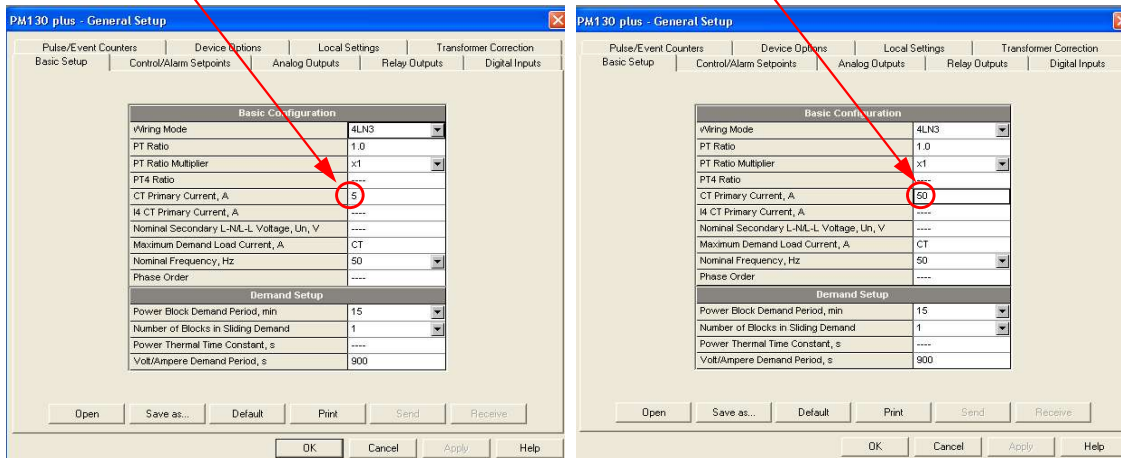
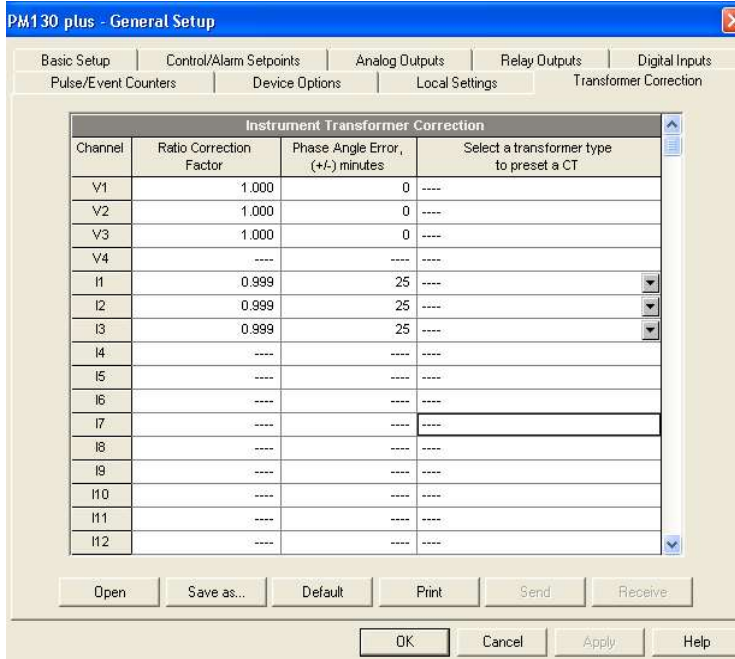


Figure 4: In device General Setup (PAS Software) “CT Primary Current” should be modified with the nominal value of the used CT (the illustrated case is $I_n=50A$ for 100A external CT).

Where: $I_n = 1/2 I_{max}$ (RATING).

In case of split core CTs set transformer correction values according to CT specifications (as printed on the CT Label).



The illustrated example is for the following values¹ of transformer correction, printed on the package of the CT:

RATIO = 0.999
PHASE = 25

¹ If values are missing, contact support to get transformer correction values specifying CT manufacture Date Code (DC xxxx)